

WORKSHOP EQUIPMENT
RECOMMENDED BY BMW / MINI



WORKSHOP EQUIPMENT RECOMMENDED BY **BMW / MINI**



Power Module Typ 000A
BMW No. 81 14 2 249



Power Module Typ xx1A-LAN
BMW No. 81 14 2 249



Power Module Typ xx3A-LAN
BMW No. 81 14 2 249 113



4-ram lift 4.55 1550/3000 -
F480 BMW
Recommendation in process



Masterlift 2.35 Pv 170-240
BMW No. 81 21 2 411 762



Masterlift 2.35 F 420 Combi
BMW No. 81 21 2 212 355



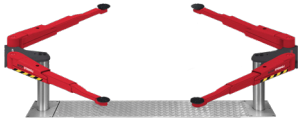
Maestro 2.50 F BMW
BMW No. 81 22 0 443 144



Masterlift 2.35 Combi
Check-in
Recommendation in process

WORKSHOP EQUIPMENT

RECOMMENDED BY **BMW / MINI**



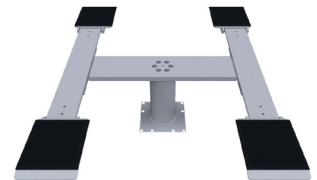
Masterlift 2.35 Saa 230
BMW No. 81 21 2 212 323



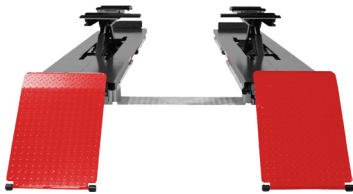
Major 4030-44 WL
BMW No. 81 21 2 359 091



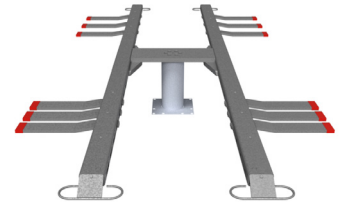
Maestro 32 F
BMW No. 81 22 2 450 041



Sololift 1.35 Pv 170-240
BMW No. 81 21 2 411 769



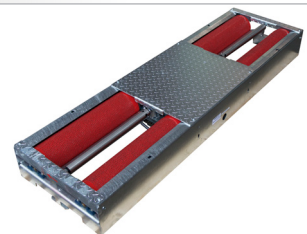
Profilift 2.40 Fn 460 BMW
BMW No. 81 21 2 212 331



Sololift 1.30 Fv Uni
BMW No. 81 21 2 432 112



Lightmaster MC17
Recommendation in process



Braketester RT 40 BMW
Recommendation in process



AUTOP **STENHOJ**



autop Maschinenbau GmbH
Sandkampstraße 90
48432 Rheine | Germany
☎ +49 5971 8602-02
✉ info@autopstenhoj.com

STENHOJ A/S
Barrit Langgade 188-190
7150 Barrit | Denmark
☎ +45 76821-330
✉ info@autopstenhoj.com